

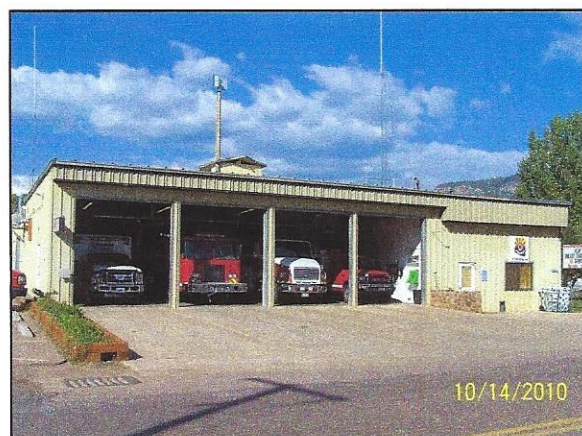
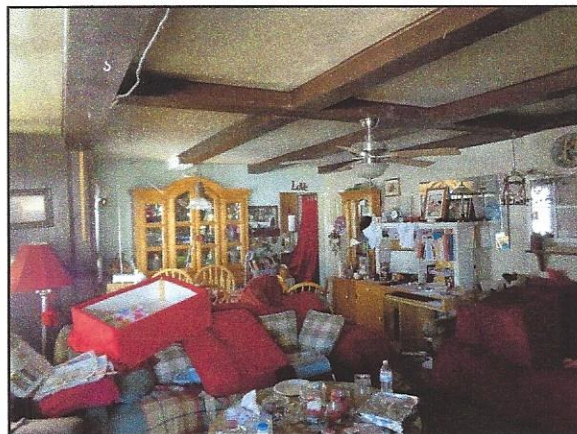
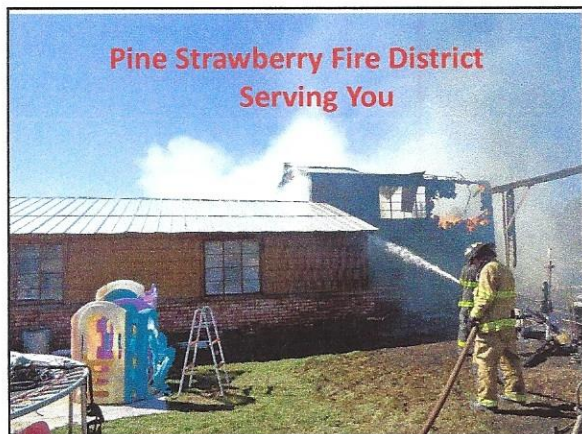


The Pine Strawberry Fire District

Surviving the Economic Crisis

Lets Talk About...

- Overview of Pine Strawberry Fire District.
- Discuss the Funding and Public Safety Issue.
(Loss of \$1 million)
- Describe the Ballot Measure and How it Will Benefit the Fire District and the Community.



Engine-411

- 1999 E-one Structural Type 1 pumper
- **Engine operation hours = 205,560 miles**
- 1000 gallons of water
- 1250 GPM pump
- Seating for 6
- Primary duty station is Pine



Engine-421

- 2005 Smeal structural Type 1 pumper
- **Engine operation hours = 166,034 miles**
- 750 Gallons of water
- 1250 GPM pump
- Seating for 4
- Primary duty station is Strawberry



Tender-411

- 2001 S&S Fire Type 1 water tender
- **Engine operation hours = 310,650 miles**
- 2100 gallons of water
- 500 GPM pump
- Seating for 2
- Primary duty station is Pine
- Wildland Duty



Tender-421

- 1996 Fireline Type 1 Water Tender
- **Engine operation= 89,450 miles**
- 3,000 gallons of water
- 750 GPM Pump
- Seating for 2
- Primary duty station is Strawberry



Engine-413

- 2003 Ford F550 Type 3
- **74,326 road miles**
- 500 gallon tank
- 250 GPM pump
- Seats 3
- Primary duty Station is Pine
- Wildland Duty



Engine-426

- 2003 Ford F450 Type 6 engine
- **63,323 road miles**
- 250 gallons of water
- 30 GPM pump
- Seating for 5
- Primary duty station is Strawberry
- Wildland Duty



Ambulance-411

- 2008 Ford F350 Type 1 ambulance
- **69,312 Road Miles** (New Engine in 2015)
- Seating for 2 workers and 2 patients
- Primary duty station is Pine



Ambulance-421

- 2014 Dodge Type 1 ambulance
- **21,217 Miles**
- Seating for 2 workers and 2 patients
- Primary duty station is Strawberry



Ambulance-422

- 2000 Ford F350 type 3 ambulance
- **95,895 miles**
- Seating for 2 workers and 2 patients
- Primary duty station is Strawberry
- Primarily a reserve ambulance



On-Duty Firefighter Staffing

Minimum Staffing

Shift Staffing

Minimum on duty staffing has been reduced from 6 to 5 firefighters in 2015 with a minimum of 2 being Paramedics. Summer staffing for holiday and major festival week ends is 6 members from May 1st through September 1st.



Emergency Medical Services

Our Greatest Activity

2015 Emergency Activity

TOTAL 631

EMS 463

FIRES 27

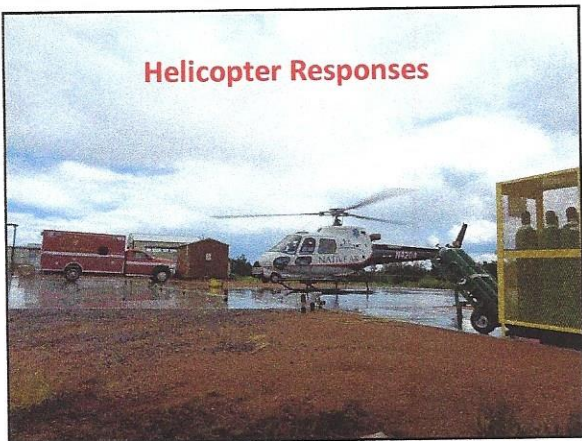
Other 141

EMS = 73.4%

Emergency Medical Services

- Cardiac Arrest – Required Resources.
- Ground Transport – 2-3 Hour Out of Service.
- Electronic Patient Reporting/Billing.
- Helicopter Transport.

Helicopter Responses



Firefighting

Structural and Wildland

Payson Regional Dispatch System

The Pine Strawberry Fire District is one of seven fire departments within the Payson regional dispatch system. Payson now dispatches for Pine-Strawberry, Hellsgate, Houston Mesa, Beaver Valley, Whispering Pines, and Christopher Kohl's fire districts.



Automatic Aid

"Automatic Aid" is part of the regional dispatch system where the closest available fire crew is dispatched no matter the jurisdiction. In a sense, the members of the regional dispatch system operate as a single fire department when responding to, and operating at, emergency incidents.



Wildland Fire Fighting

A Revenue Generator

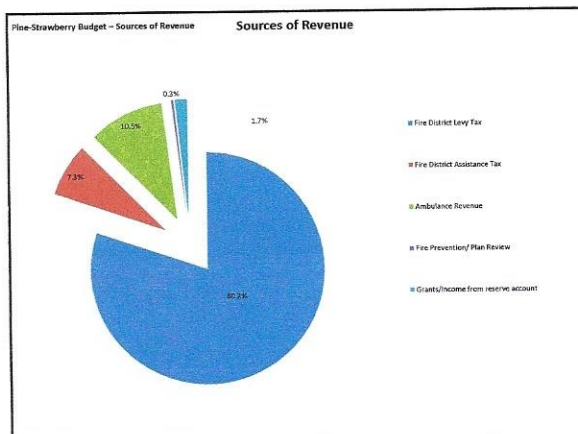


Budget Considerations

History and Survival

Sources of Revenue

- Fire District Levy Tax 80.2%
- Fire Department Assistance Tax 7.3%
- Ambulance Transport Fees 10.5%
- Fire Prevention Plans Review Fees 0.3%
- Interest on Reserve Fund 1.7%
- Wildland Firefighting Fees
- Federal Grants



Reserve Fund

- Reserved for Emergency Financial Situations.
- Capital Expenditures Such as Fire Trucks and Other High Dollar Equipment (i.e. EKG/Defib).
- Wildland Revenues Dedicated to Reserve.

Budget Transparency

- James Vincent Group, LLC.
- Community Advisory Group.
- Provide a Third Party, Independent, Professional and Transparent Review of Budget and Proposed Ballot Measure.

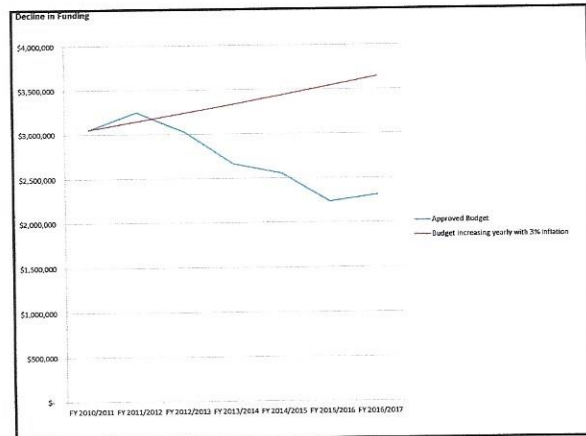
Surviving The Economic Crisis

2010 - 2015

Surviving the Crisis

Revenue Reductions

- 2011/2012 Budget- **\$3,248,281.00**
- 2015/2016 Budget - **\$2,254,726.00**
- **30.6 Percent Reduction in Revenue!**



Surviving the Crisis

- **Eliminated** 3 Full-Time Firefighter Paramedic Positions.
- **Eliminated** 2 Part-Time Civilian Positions.
- **Result: Shift Staffing Reduced from 6 to 5.**
- **Result: Reduced Emergency Capabilities.**
- **Result: Increased Lack of In-Town Staffing.**

Surviving the Crisis

- Substantially Reduced Overtime Use.
- Reduced Training Budget.
- Fire Chief Works Hours Reduced to 32 Hours.
- Salary Rate Less than Previous Fire Chief.
- **Result: Reduced Efficiency in Fire District Operations.**

Surviving the Crisis

- Suspension of Capital Purchases of Fire Trucks and Major Equipment.
- Froze Any Pay Increases (None since 2008).
- **Result: Aging Fire Trucks/More Maintenance.**
- **Result: Aging Equipment (SCBA, EKG, etc).**
- **Result: Weak Radio Communication System.**
- **Result: Firefighters Seeking Other Fire Dept's.**

Surviving the Crisis

- DHS Approved Ambulance Fee Increase.
- Increased Use of Reserve Firefighters.
- Joint Purchasing Consortium.
- Regional Dispatch Center.
- Health Insurance Pool.
- Pursued Grants.
- **Result: Some Cost Savings Achieved.**

Budget Considerations

Inflationary Costs Increasing

- 2015/2016 Revenue Increases = **\$16,239**
- **But...**
- **Health Insurance Alone Increased \$28,107!**

Budget Considerations

Inflationary Costs Increasing

- 2016/2017 Revenue Increases = **\$66,204**
- **But...**
- **Inflationary Costs Increased to \$74,178!**

Budget Considerations

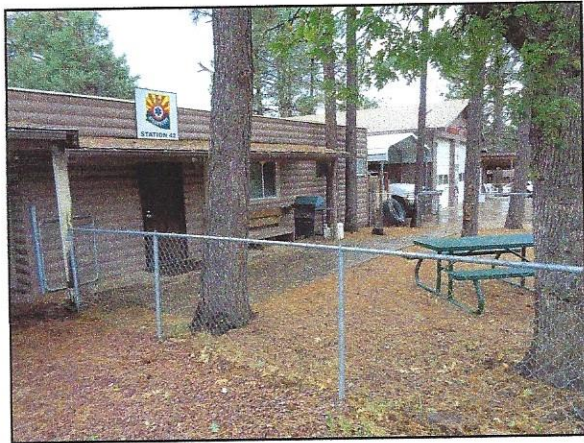
Vehicle/Apparatus Needs and Plan

- | | |
|---------------------------------------|-----------|
| • 2017 Ambulance 422 | \$174,000 |
| • 2018 Engine 413, Pickup, Chiefs Car | \$230,000 |
| • 2019 Engine 411, Engine 426 | \$690,000 |
| • 2020 Ambulance 411, Tender 41 | \$524,000 |
| • 2021 Tender 421 | \$350,000 |
| TOTAL = \$1.9 Million | |

Budget Considerations

Facility Needs and Plan

- Replace Strawberry Station Living Quarters.
- Repairs and Upgrades on Pine Fire Station.
- Repairs to Administration Building.
- Garage to House Reserve Pumper Truck.
- TOTAL = \$266,000**



Legislature Responds

- 2015 Legislative Session Forms Study Group

"Joint Legislative Committee on Rural Fire Area Districts Funding and Taxation"

Committee Meetings Began in the Fall of 2016

Legislature Responds

- 148 Fire District in Arizona.
- 48 Fire Districts Eliminating Positions or Closing Stations in 2015.
- Now 54 Fire Districts Eliminating Positions or Closing Stations in 2016

Legislature Responds

Fire District Levy Regulation

- Fire District Levy Tax: \$3.25 Per Limited Property Value.
- Rate Established in 2005.
- No Inflationary Formula.
- **No Adjustment in 11 Years.**

Legislature Responds

Recovery Time

- Analysis by Financial Experts on Projections For Fire District to Recover = **8-12 Years.**
- **Cause: Mix of Lack of Revenue Generation, Inflationary Costs That Are Increasing at a Rate Greater Than Revenue Generated, and State Regulatory Control.**

Legislative Efforts

2016 Legislative Session

- Senate Bill 1244, Senator Allen
- **Nearly 100% Votes in Favor of Passage.**
- In Agreement With the Arizona Tax Research Association.
- Increase to \$3.50 Per Limited Property Value.

Legislative Efforts

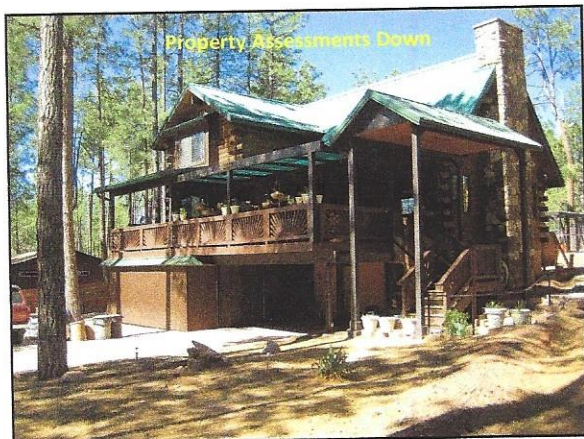
2016 Legislative Session.

- Voter Approved Override.
- 5 Year Life Span.
- Only for the General Election of 2016 or 2017.

Ballot Measure Approved

Revenue Generated

- First Year Revenue = **\$148,000.**
- 5 year Total Projection = **\$768,000.**



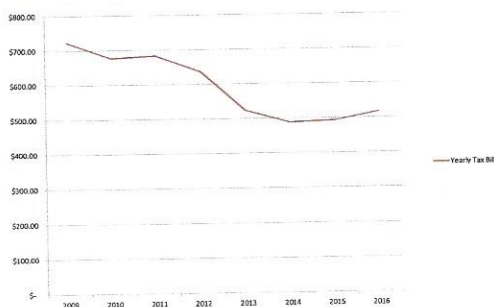
Ballot Measure Approved

- Recession Also Reduced Property Taxes.

2009	\$722.56	2013	\$523.51
2010	\$676.99	2014	\$487.75
2011	\$683.61	2015	\$492.83
2012	\$637.03	2016	\$517.50

A \$205.06 REDUCTION IN TAXES

Example of a yearly tax bill reduction for a specific home in Strawberry



Ballot Measure Approved

Impact on Fire District Property Tax Bill if Ballot Measure Passes

\$300 Current – Adds \$24 – 7 Cents Per Day
 \$450 Current – Adds \$36 – 10 Cents Per Day
 \$750 Current – Adds \$59 – 16 Cents Per Day

Ballot Measure Approved

Where The Revenue Goes

- Replace Strawberry Station Living Quarters.
- Purchase/Replace An Ambulance.
- Purchase Fire Pumper Truck (Old to Reserve).
- Build Garage for Reserve Fire Pumper Truck.
- Pay Increases for Firefighter/Paramedics?



Ballot Measure NOT Approved

Budget and Operational Cuts Will Continue

- Eliminate Remaining Training and Equipment Replacement Funds.
- Eventual Closure of Strawberry Station.
- Eventual Elimination of Firefighter Paramedic Positions.
- And the Financial Squeeze Will Continue.

Ballot Measure NOT Approved

- Result: Closed Strawberry Fire Station.
- Result: Fewer On Duty Firefighter Paramedics
- Result: Longer Response Times.
- Result: Reduced Medical Capabilities.
- Result: Reduced Firefighting Capabilities.

Ballot Measure NOT Approved

- Result: Greater Periods Without In-Town Staffing.
- Result: Reduced Patient Survival Profiles.
- Result: Aging, Unreliable Fire Trucks.
- Result: Increased ISO Rating/Premiums.

QUESTIONS?

Thank You

- 20 October 2016, 1300 hours